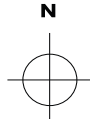


PENSNETT ESTATE
 Kingswinford,
 West Midlands, DY6 7NA



KINGSWINFORD ←

→ **DUDLEY**



prime point

PART OF THE **DY5** DUDLEY'S BUSINESS & INNOVATION ENTERPRISE ZONE

CURRENTLY UNDER DEVELOPMENT

G1 G2

MAIN ENTRANCE GATE 1

ENTRANCE GATE 5

ENTRANCE GATE 4

ENTRANCE GATE 3

ENTRANCE GATE 2

STALLINGS LANE B4175

TANSEY GREEN ROAD

DANDY BANK ROAD

DUDLEY ROAD A4101

THIRD AVENUE

THIRD AVENUE

THIRD AVENUE

SECOND AVENUE

SECOND AVENUE

FIRST AVENUE

FIRST AVENUE

FIRST AVENUE

FIRST AVENUE

FIRST AVENUE

FIRST AVENUE

FIRST AVENUE

NEWTON HOUSE

WATT HOUSE

BAIRD HOUSE

Innovation Centre

DARWIN HOUSE

Starbuck's Retail

Progress Point

LCP HOUSE

53C

53B

53A

THIRD AVENUE

THIRD AVENUE

THIRD AVENUE

SECOND AVENUE

SECOND AVENUE

FIRST AVENUE

FIRST AVENUE

FIRST AVENUE

NEWTON HOUSE

WATT HOUSE

BAIRD HOUSE

Innovation Centre

DARWIN HOUSE

Starbuck's Retail

Progress Point

LCP HOUSE

53C

53B

53A

THIRD AVENUE

THIRD AVENUE

THIRD AVENUE

SECOND AVENUE

SECOND AVENUE

FIRST AVENUE

FIRST AVENUE

FIRST AVENUE

NEWTON HOUSE

WATT HOUSE

BAIRD HOUSE

Innovation Centre

DARWIN HOUSE

Starbuck's Retail

Progress Point

LCP HOUSE

PENSNETT ESTATE

Kingswinford, West Midlands, DY6 7NA

Looking for commercial property?

Find out more about available properties on the estate.



01384 400123

www.lcpproperties.co.uk/pensnett

TENANT	BUILDING No.	MAP REF.
A & E Witt Limited	Darwin House	D9
AAMP Global	94	F8
Ace Forming	32	G3
Action Heart	Baird House	E9
Air Conditioning & Heating 4U Ltd	53A	D5
Alexander Comley Ltd	1	K8
Allied Machine & Engineering Co Ltd	93	G9
Altodigital UK Ltd	93	G9
Aluminium Special Products Ltd	39	F5
Ampronic Control Systems Ltd	23	J3
Andy's Autos & MOT Centre	26	J4
Arenko Pineau Ltd	49	D4
Arks Tool Hire Ltd	22	J7
Armorduct Systems Ltd	9	J2
ASC UK Ltd	56	F7
Ash Remediation Management Ltd	22	J7
Asprey Management Solutions Ltd	LCP House - 36	J5
Axiom Dental Lab	Newton House	D8
Beck Prosper Manufacturing	14 & 19	I7-H8
BF Entron Ltd	80	H3
Black Country Traditional Inns Ltd	69	C3
Blue Fish Water Management Ltd	Progress Point B	H8
Bookers Ltd	89	E8
Borche Machinery (UK) Ltd	83	I3
Boss Design Ltd	44	F4
Bowman International Ltd	69	C3
Britton Price Ltd	53C	D3
C7 Contractors Ltd	53C	D3
Cadent Gas Ltd	1	K8
Gamis Electronics Ltd	80	H3
Certas Energy Ltd	Prime Point D	K6
Cool Services	26	J4
Cool Spot	26	J4
Cope Technology Ltd	32	G3
Cordant Security	Darwin House	D9
Countrywide Freight Group	56	F7
Crossroads Care	Watt House	D9
Cubic Transportation Systems (ITMS) Ltd	83	I2
Cyanotec Ltd	62	E5
D A Profiles Ltd	80	H3
Decitex Ltd	25	J5
Diesel Technic UK & Ireland Ltd	92	F9
DVSA	Newton house	D8
Easiflo Investments Ltd	64	D7
Electroflock Ltd	33	G4
Elta Fans Ltd	45 & 46	F5-D4
Empire Sports	53B	D3
Engineers Mate	7	J3
Environmental Compliance	26	J4
Envirotrete Technologies Ltd	LCP House - 36	J5
Eriks Industrial Services Ltd	Prime Point B	K5
Euro Distribution UK Ltd	LCP House - 36	J5
European Cleveland Ltd	32	G3

TENANT	BUILDING No.	MAP REF.
Evoca	Prime Point C	L5
FAS Window Films	53A	D5
Frameclad Ltd	40 & 50	E2 & E3
Furmanac Furniture	71	D2
Gemini Repair Centre Ltd	28 & Progress Point A	I9-H8
General Kinematics Ltd	Darwin House	D9
GHL Lift Trucks Ltd	84	I2
Glendenning Plastics Ltd	18 & 20 & 27	I6-J6-I5
GMC Services Ltd	LCP House - 36	J5
Gotham Bespoke Ltd	53A	D5
Green Fire Engineering	53B	D3
Greggs Plc	39	F5
Handicare Accessibility	81 & 82 & 84	H2-I2
Hartshorne Motor Services Ltd	2	K7
Helix Trading Ltd	92	F9
Hermes Parcelnet	Progress Point C	G9
Hills Electrical Contractors Ltd	53A	D5
Hison Services	7	J3
IBP Group (Conex Universal Ltd)	92 & 95	F9-G8
Industrial Telecom Ltd	LCP House - 36	J5
Integrated Packing Services Ltd	61	D5
International Piping Products (Europe) Ltd	Prime Point A	J5
Interserve	57	E5
Intralox Ltd	60 & 64 & 90	C7-D7
IPCO UK Process Systems Limited	Progress Point B	H8
JG Foods Ltd	2	K7
JJX Logistics	65, 66 & 68	B3 -C4-C5
Jonathan Lee Contracts Ltd	53B	D3
K Jones Construction Specialists	1	K8
KC ProSupply UK Ltd	42	E2
Kennametal UK Ltd	14	I7
Keyline Builders Merchants	11	J4
Keymas Ltd	Darwin House	D9
Kinver Business Solutions	LCP House - 36	J5
Kiwi IT Solutions Ltd	Darwin House	D9
Kuehne + Nagel Limited.	32	G3
L Thompson T/A Bright & Beautiful	53A	D5
LGX Roofing & Construction Ltd	53A	D5
Lifestyle Windows Kingswinford Ltd	26	J4
Lodi UK Ltd	69 & 70	C2-C3
M + Arc Robotic Support Limited.	53A	D5
M Foster Construction Ltd	LCP House - 36	J5
Mark Gough	Baird House	E9
Martin & Griffiths Automobile Engineers	22	J7
Mayfield Trade	LCP House - 36	J5
MGB Press Brake Sections Ltd	83	I3
Midland Bearings (PT) Ltd	33	G4
Midland Pallet Trucks Ltd	33	G4
Midland Scales Ltd	33	G4
Midsteel Flanges & Fittings Ltd	51	D3
Milton Keynes Surveys Limited	LCP House - 36	J5
Mr Pretzels (UK) Retail Ltd	Progress Point B	H8
MTI Welding Technologies	80 & 81	H2-H3

TENANT	BUILDING No.	MAP REF.
Multi Glazing Systems Ltd	83	I3
National Express (Bus Garage)	35	F6
NeoNickel (CML Alloys)	8	I3
Net & Cover Services	53C	D3
NHS Property Services	5	I4
Nidec Mobility UK Ltd	Darwin House	E9
Nova Design & Management Ltd	Watt House	D9
Novametal Wire UK Ltd	LCP House - 36	J5
Omnisty Ltd	Newton House	D8
Pallet Truck Shop Ltd	33	G4
Pallet Trucks UK Ltd (Midland Bearings)	33	G4
Papa Johns	Gatehouse Retail	E9
Paul Hill T/A Biker Store UK	Baird House	E9
Pencom Engineering Ltd	63	D6
Phoenix Seating Ltd	47 & 70	E7-C2
Playbox Day Nursery	53A	D5
Plaza Interior Designs Ltd	70	C2
Prestwood Software Ltd	Darwin House	D9
Provident Financial Plc	Darwin House	D9
Quality Print Plus	39	F5
Quasartronics Ltd	Watt House	D9
Really Useful Products Ltd	96	J6
Redfox Consultancy	53A	D5
RGR Fabricating & Welding Services	23	J3
Rift Valley Foods	62	E5
Righton & Blackburns Ltd	31 & 38 & 43	G2-G5-F3
Ripley Europe Ltd	47	E7
Routeco Ltd	53A	D5
Royston Handley	53B	D3
RP Technologies Ltd	54	H7
S & A Accountancy T/A Robert Brown & Co	Darwin House	E9
Shape Technologies Ltd	26	J4
Shropshire Community Health NHS Trust	Progress Point B	H8
Simworx Ltd	37	F2
Smithpack Ltd	55	G7
Stanford Construction Ltd	Baird House	E9
Steve Vick International Ltd	53C	D3
Stiltz Ltd	5	I4
Storite UK Ltd	53A	D5
Supreme Heating Services	53C	D3
Sven Christiansen Plc	21, 22 & 29	I8-J7-J6
The Appliance Gallery	53A	D5
The Ducatt Heating Company	Baird House	E9
The Foil Specialists	Progress Point B	H8
The Guild of Master Craftsmen Services Ltd	LCP House - 36	J5
Top Draw Interior Contractors Ltd	22	J7
Troax Lee Manufacturing Ltd	52	D2
UK Brick & Cladding Ltd	Darwin House	D9
Valeon Building Solutions	53B	D3
Weybury Hildreth Ltd	47	E7
Whiteley Home Services Ltd	83	I3
Wincanton	30	J1