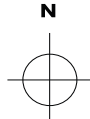


PENSNETT ESTATE
 Kingswinford,
 West Midlands, DY6 7NA



prime point
 PART OF THE
DY5 DUDLEY'S BUSINESS &
 INNOVATION ENTERPRISE ZONE

KINGSWINFORD ←

→ **DUDLEY**



NEWTON HOUSE
 WATT HOUSE
 BAIRD HOUSE
 Innovation Centre
 DARWIN HOUSE

Progress Point
 A
 B
 C

A
 B
 C
 D
 E
 F
 G1
 G2

ENTRANCE GATE 5

ENTRANCE GATE 4

ENTRANCE GATE 3

MAIN ENTRANCE GATE 1

ENTRANCE GATE 2

STALLINGS LANE B4175

TANSY GREEN ROAD

DANDY BANK ROAD

DUDLEY ROAD A4101

THIRD AVENUE

SECOND AVENUE

FIRST AVENUE

THIRD AVENUE

FIRST AVENUE

MARK GIBBER WAY

THIRD AVENUE

THIRD AVENUE

THIRD AVENUE

THIRD AVENUE

SECOND AVENUE

SECOND AVENUE

FIRST AVENUE

FIRST AVENUE

FIRST AVENUE

FIRST AVENUE

THIRD AVENUE

THIRD AVENUE

THIRD AVENUE

THIRD AVENUE

SECOND AVENUE

SECOND AVENUE

SECOND AVENUE

SECOND AVENUE

FIRST AVENUE

FIRST AVENUE

FIRST AVENUE

FIRST AVENUE

MARK GIBBER WAY

DANDY BANK ROAD

DUDLEY ROAD A4101

TANSY GREEN ROAD

THIRD AVENUE

SECOND AVENUE

FIRST AVENUE

THIRD AVENUE

FIRST AVENUE

MARK GIBBER WAY

THIRD AVENUE

THIRD AVENUE

THIRD AVENUE

THIRD AVENUE

SECOND AVENUE

SECOND AVENUE

SECOND AVENUE

SECOND AVENUE

FIRST AVENUE

FIRST AVENUE

FIRST AVENUE

FIRST AVENUE

MARK GIBBER WAY

DANDY BANK ROAD

DUDLEY ROAD A4101

TANSY GREEN ROAD

PENSNETT ESTATE

Kingswinford, West Midlands, DY6 7NA

Looking for commercial property?

Find out more about available properties on the estate.



01384 400123

www.lcpproperties.co.uk/pensnett

TENANT	BUILDING No.	MAP REF.
A & E Witt Limited	Darwin House	D9
AAMP Global	94	F8
Ace Forming	32	G3
Air Conditioning & Heating 4U Ltd	53A	D5
Alexander Comley Ltd	1	K8
Allied Machine & Engineering Co Ltd	93	G9
Altdigital Managed Services Ltd	5	I4
Altdigital Networks UK Ltd	93	G9
Aluminium Special Products Ltd	39	F5
Ampronic Control Systems Ltd	23	J3
Andy's Autos & MOT Centre	26	J4
Arenko Pineau Ltd	49	D4
Arks Tool Hire Ltd	22	J7
Armorduct Systems Ltd	9	J2
ASC UK Ltd	56	F7
Ash Remediation Management Ltd	22	J7
Axiom Dental Lab	Newton House	D8
Beck Prosper Manufacturing	14 & 19	I7-H8
BF Entron Ltd	80	H3
Biker Store UK	Baird House	E9
Black Country Traditional Inns Ltd	69	C3
Blue Fish Water Management Ltd	Progress Point B	H8
Bookers Ltd	89	E8
Borche Machinery (UK) Ltd	83	I3
Boss Design Ltd	44	F4
Bowman International Ltd	69	C3
Brierley Hill Baby Bank	Darwin House	D9
Cadent Gas Ltd	1	K8
Camis Electronics Ltd	80	H3
Capital SFLU Group Ltd	67 & 5	C3-I3
Certas Energy Ltd	Prime Point D	K6
Conex Universal Limited	95	G8
Cool Services	26	J4
Cool Spot	26	J4
Cope Technology Ltd	32	G3
Countrywide Freight Group	56	F7
Crossroads Care	Watt House	D9
Cubic Transportation Systems (ITMS) Ltd	83	I2
Cyanotec Ltd	62	E5
D A Profiles Ltd	80	H3
Dean Pearson & Lee Pearson	53A	D5
Deborah Roberta Mason	53A	D5
Delroy Sampson	Churchill House	C4
Diesel Technic UK & Ireland Ltd	92	F9
Dudley Group NHS Foundation Trust	5	I3
Dudley Integrated Health and Care NHS Trust	Progress Point B	H8
Dudley Social Business Ltd	39	F5
DY Shutters Ltd	53A	D5
Easiflo Investments Ltd	64	D7
Electroflock Ltd	33	G4
Elta Fans Ltd	45 & 46	F5-D4
Empire Sports	53B	D3
Engineers Mate	7	J3
Environmental Compliance Ltd	26	J4
Envirotrat Technologies Ltd	LCP House - 36	J5
Eriks Industrial Services Ltd	Prime Point B	K5

TENANT	BUILDING No.	MAP REF.
Evoca	Prime Point C	L5
Exercise Rehabilitation Association Ltd	Baird House	E9
Fairview Health Ltd	Progress Point C	G9
Four Seasons Health Care	Baird House	E9
Frameclad Ltd	40 & 50	E2-E3
Furmanac Furniture	63 & 71	D6-D2
Gary Waterhouse & Michael Frank Anson	53C	D3
Gemini Repair Centre Ltd	28 & Progress Point A	I9-H8
General Kinematics Ltd	Darwin House	D9
Glendenning Plastics Ltd	20, 27 & Prime Point F	J6-I5-L7
GMC Services Ltd	Churchill House	C4
Gotham Bespoke Ltd	53A	D5
Green Fire Engineering	53B	D3
Greggs Plc	39	F5
Ground Investigation & Piling Ltd	53C & 62	D3-E5
Handicare Accessibility	81 & 82 & 84	H2-I2
Harrisons Health Clinics Ltd	Gatehouse Retail	E9
Hartshorne Motor Services Ltd	2	K7
Helix Trading Ltd	92	F9
Hills Electrical Contractors Ltd	Newton House	D8
Hison Services	7	J3
HW Print Ltd.	53C	D3
IBP Group (Conex Universal Ltd)	92 & 95	F9-G8
Igloo FM	Baird House	E9
Integrated Packing Services Ltd	61	D5
International Piping Products (Europe) Ltd	Prime Point A	J5
Intralox Ltd	60 & 64 & 90	C7-D7
IPCO UK Process Systems Ltd	Progress Point B	H8
Jayflex Limited.	53A	D5
JC Wedding and Party Services Ltd	53C	D3
JG Foods Ltd	2 & 63	K7-D6
JJX Logistics	65 & 66 & 68	B3-C4-C5
JL Drinks Limited	18	I6
JP Complete Groundworks Ltd	53A	D5
K Jones Construction Specialists Ltd	1	K8
KC ProSupply UK Ltd	42	E2
Kennametal UK Ltd	14	I7
Keyline Builders Merchants	11	J4
Kiwi IT Solutions Ltd	Darwin House	D9
Koverco Limited	25	J5
L Thompson T/A Bright & Beautiful	53A	D5
LGX Roofing & Construction Ltd	53A	D5
Lifestyle Windows Kingswinford Ltd	26	J4
Little Bam Bams Curiosity Village Ltd	Newton House	D8
Lodi UK Ltd	69 & 70	C2-C3
M + Arc Robotic Support Limited	53A	D5
M Foster Construction Ltd	LCP House - 36	J5
Mark Gough	Baird House	E9
Martin & Griffiths Automobile Engineers	22	J7
Martin Robbins	84	I2
Merek Engineering	22	I7
MGB Press Brake Sections Ltd	83	I3
Midland Bearings (PT) Ltd	33	G4
Midland Futsal Academy	Newton House	D8
Midland Pallet Trucks Ltd	33	G4

TENANT	BUILDING No.	MAP REF.
Midland Scales Ltd	33	G4
Midsteel Flanges & Fittings Ltd	51	D3
Milton Cable Management Systems Ltd	Prime Point G2	L8
Mitie FM Limited	47 & 57	E7-E5
Mr Pretzels (UK) Retail Ltd	Progress Point B	H8
MTI Welding Technologies	80 & 81	H2-H3
Multi Glazing Systems Ltd	83	I3
National Food Machinery Services	53C	D3
NeoNickel (CML Alloys)	8	I3
Nova Design & Management Ltd	Watt House	D9
Novametal Wire UK Ltd	LCP House - 36	J5
Original Souvlaki BBQ Ltd	Baird House	E9
Pallet Truck Shop Ltd	33	G4
Pallet Trucks UK Ltd (Midland Bearings)	33	G4
Papa Johns	Gatehouse Retail	E9
Pencom Engineering Ltd	63	D6
Phoenix Sealing Ltd	47 & 70	E7-C2
Plaza Interior Designs Ltd	70	C2
Prestwood Software Ltd	Darwin House	D9
Provident Personal Credit	Watt House	D9
Quasartronics Ltd	Watt House	D9
Reactive Driving Recruitment Ltd	Watt House	D9
Really Useful Products Ltd	96	J6
Redfox Consultancy	53A	D5
Rift Valley Foods	62	E5
Righton & Blackburns Ltd	31 & 38 & 43	G2-G5-F3
Ripley Europe Ltd	47	E7
Royston Handley	53B	D3
RP Technologies Ltd	54	H7
S & A Accountancy T/A Robert Brown & Co	Darwin House	E9
Screwfix	32	G3
Shape Technologies Ltd	26	J4
Simworx Ltd	37	F2
Smithpack Ltd	55	G7
Static Systems Group PLC	62	E5
Steve Bromley & Sons Carpet & Flooring Ltd	Darwin House	D9
Steve Vick International Ltd	53C	D3
Stiltz Ltd	Prime Point E	L7
Supreme Heating Services	53C	D3
Sven Christiansen Plc	21 & 22 & 29	I8-J7-J6
Teddington Appliance Controls Ltd	Darwin House	E9
The Appliance Gallery	53A	D5
The Secretary of State for Communities	Newton House	D8
This is Fitness	Baird House	E9
Topdraw Interior Contractors Ltd	22	J7
Total Kare Workshop Solutions	Prime Point G1	L8
Troax Lee Manufacturing Ltd	48 & 52	E6-D2
Ubuild Materials Ltd.	48	E6
Valeon Building Solutions	53B	D3
West Midlands Travel Ltd	35 & 59	F6
Weybury Hildreth Ltd	47	E7
Whiteley Home Services Ltd	83	I3
Wincanton	30	J1
Wolverhampton Glass	Progress Point C	G9
XPO Supply Chain UK Ltd	32	G3